



Stand With the Legends



Rise.

Redefine.

Reign.

The Inland Steel Building stands tall amid Chicago's celebrated skyline: a commanding architectural legend centered in the Loop. Our offices are boutique with a roar and fuse classic allure with modern grandeur.

Establish yourself at the Inland Steel Building and join an illustrious community, whether brainstorming in fresh spec suites with sweeping city views, energizing at the gym, or immersing yourself in cultural icons like Millennium Park and the Art Institute. Come stand with the legends and write tomorrow's history amongst today's titans.



A Modern Classic

The Inland Steel Building's shimmering stainless steel facade is an ode to its namesake; the building has maintained its landmark status as a symbol of the city's resilient spirit and architectural prowess since 1958.

19-Story Office Building

Timeless by Design

238,000 SF

Post-Modern Office Space

Brand New Spec Suites

With Elevated Finishes
Coming in 2025

Floor-to-Ceiling Windows

Brimming With Sunlight

Unobstructed Views

360 Degrees

13,424 SF

Column-Free, Efficient Floor Plates

Private Valet Parking

With 72 Spaces

Bike Storage

On-site

LEED Gold Certified

Seize A Rare Opportunity

Claim your space in the iconic Inland Steel Building with availability ranging from spec suites to full or partial floors.

Suite 1400

6,475 RSF

Suite 1300

7,556 RSF

Suite 910

3,725 RSF

Suite 700

13,424 RSF (full floor)

Suite 200

9,826 RSF (full floor)

Suite 1500

13,424 RSF (full floor)

Suite 1410

6,949 RSF

Suite 1000

13,424 RSF (full floor)

Suite 800

13,424 RSF (full floor)

4,209 RSF (spec A)

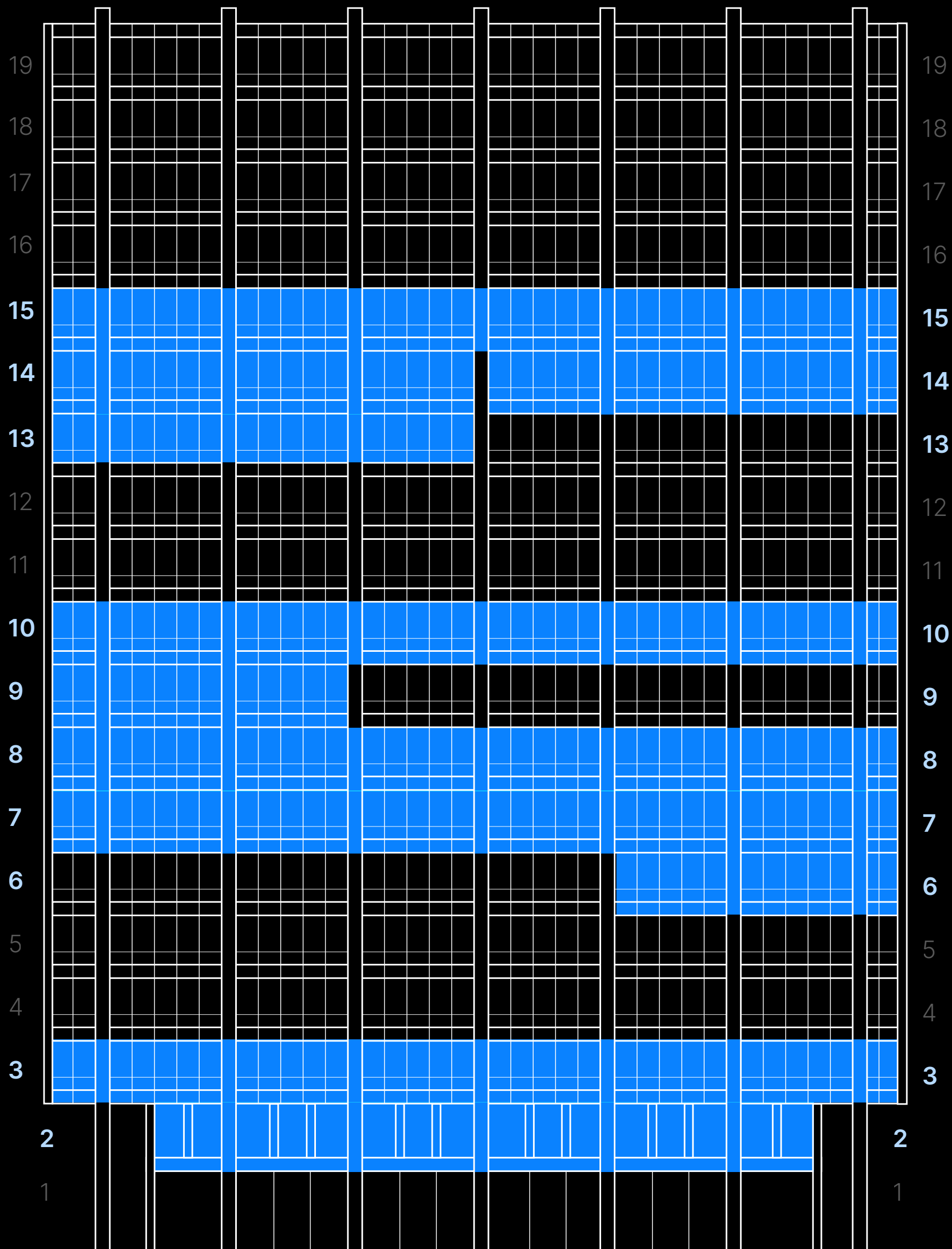
9,215 RSF (spec B)

Suite 610

3,832 RSF

Suite 300

13,424 RSF (full floor)



OFFERING

A Boutique Masterpiece

With the added luxury of smaller floor plates and efficiently built-out spec suites, the Inland Steel Building creates intimate workspaces where each day is yours.



4,200 – 9,200 SF

Brand New Spec Suites

Column-Free

Floor Plates

Floor-to-Ceiling Windows

Private Valet Parking

With 72 Spaces





8th Floor Spec Suite



NEIGHBORHOOD

The Heart of the Loop

Positioned for power in the heart of Chicago's iconic Loop, the Inland Steel Building stands with intent, anchoring the crossroads of the city's business community and unmatched cultural dynamism. With supreme walkability and bikeability, you navigate the city on your terms.

NEIGHBORHOOD

100 Walk Score

81 Bike Score

Millennium
Metra Station

9 min. walk / 4 min. bike

Monroe
L Station

Immediately adjacent

Millennium Park

9 min. walk / 4 min. bike

Lake Shore Drive

5 min. drive

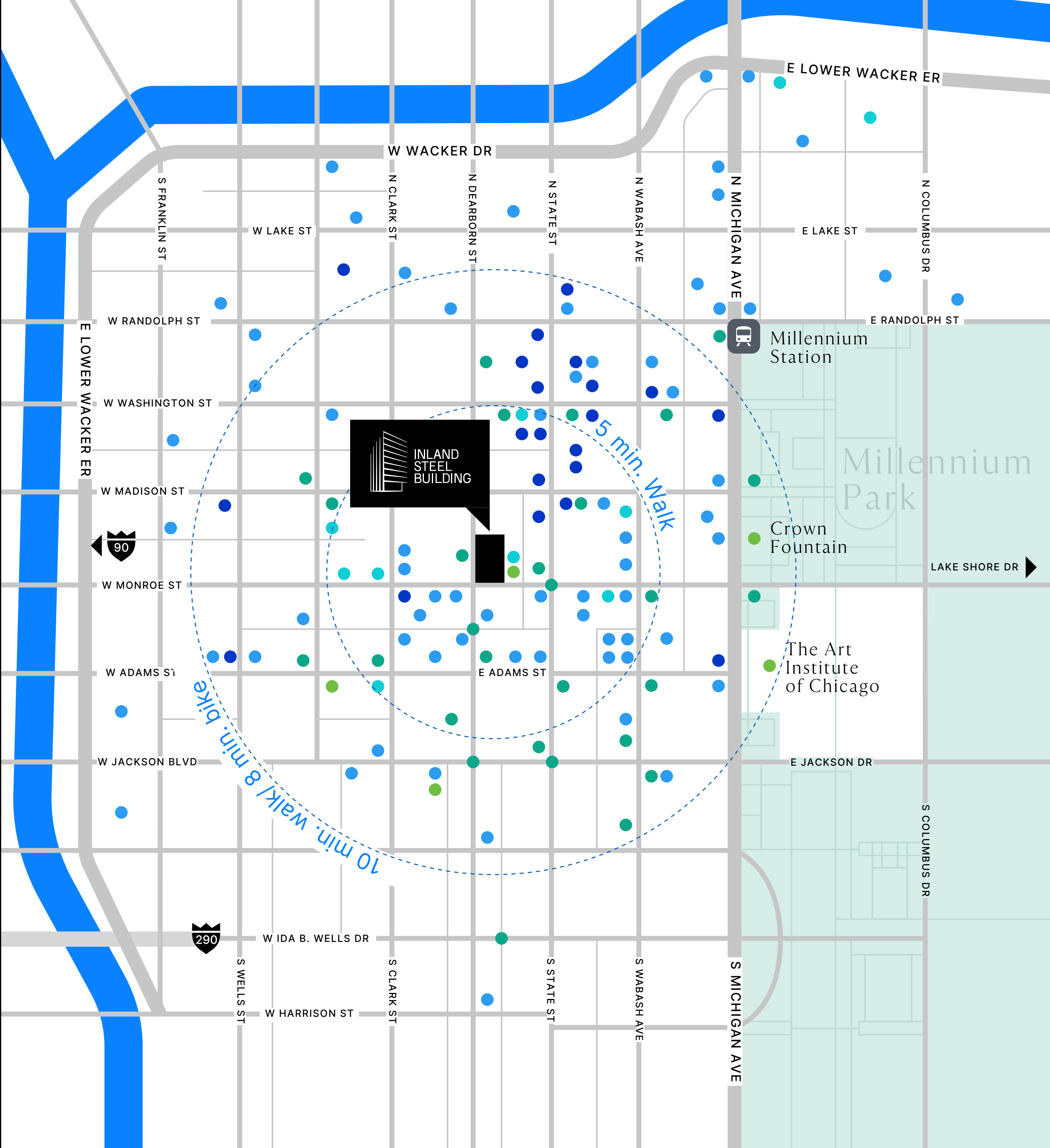
The Art Institute

8 min. walk / 4 min. bike

I-90

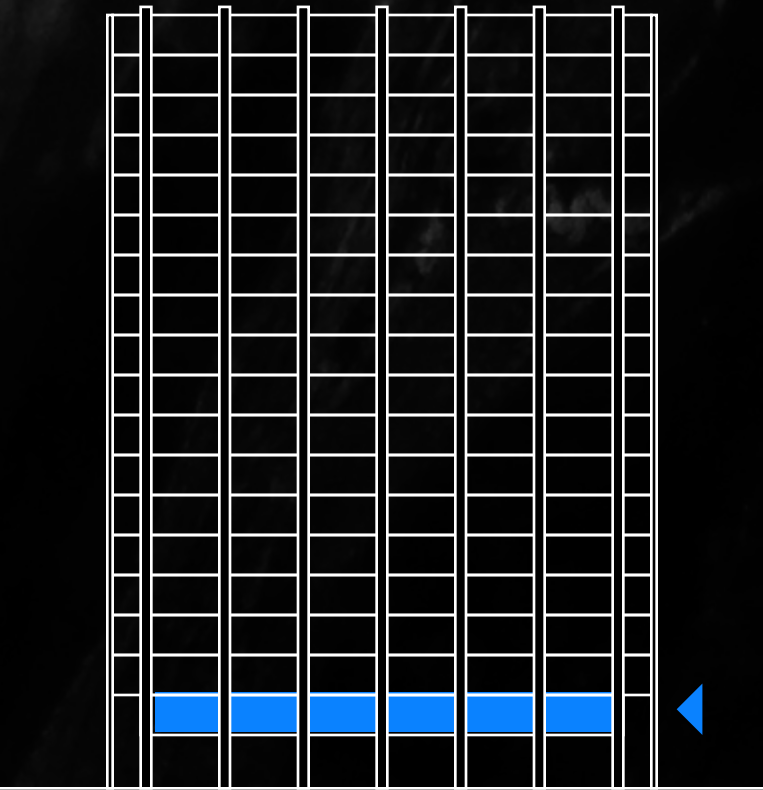
5 min. drive

- Dining
- Hospitality
- Retail
- Transit
- Points of Interest

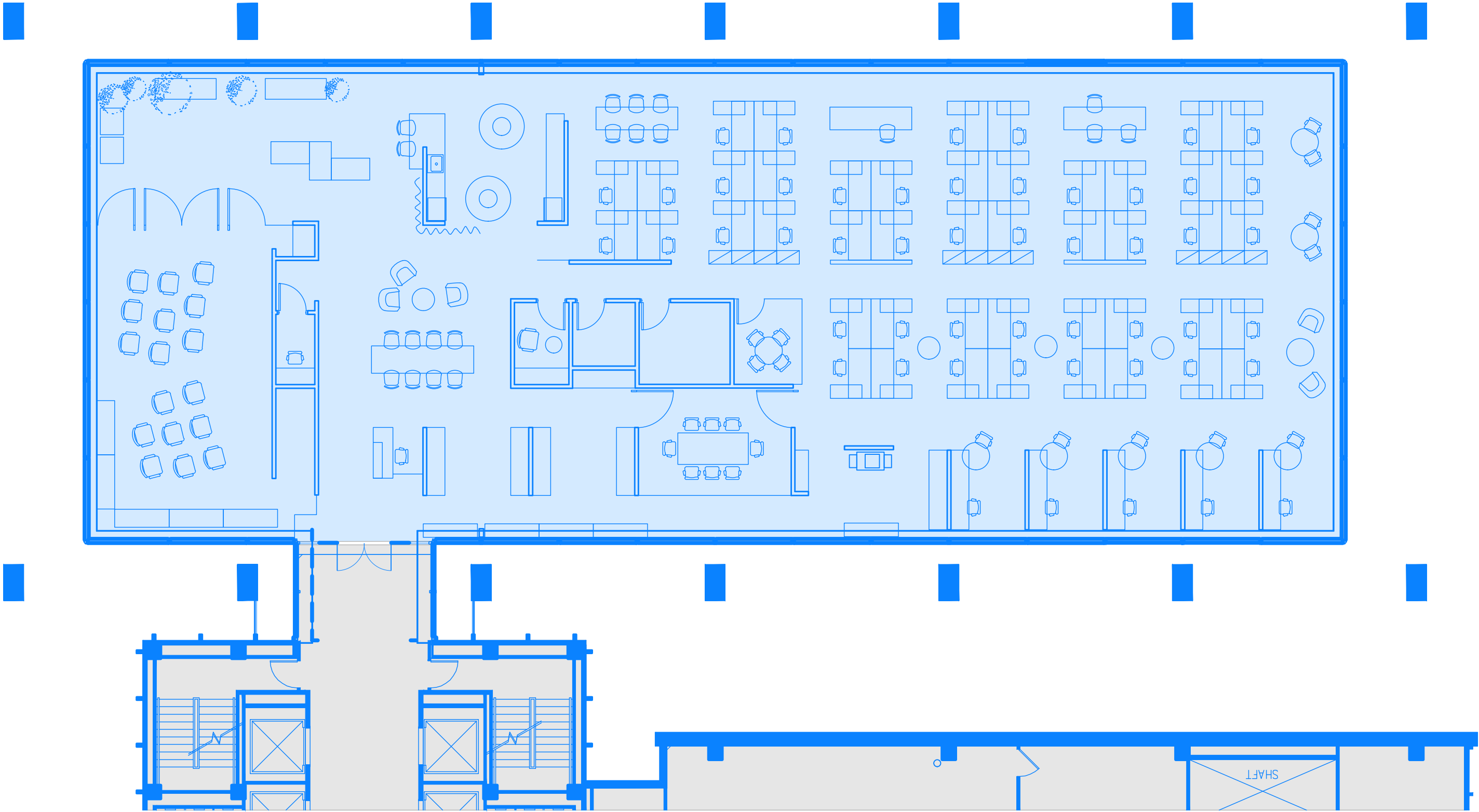


Floor 2

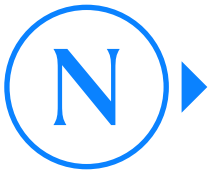
Suite 200 | 9,826 RSF (full floor)



◀ Back to stacking plan

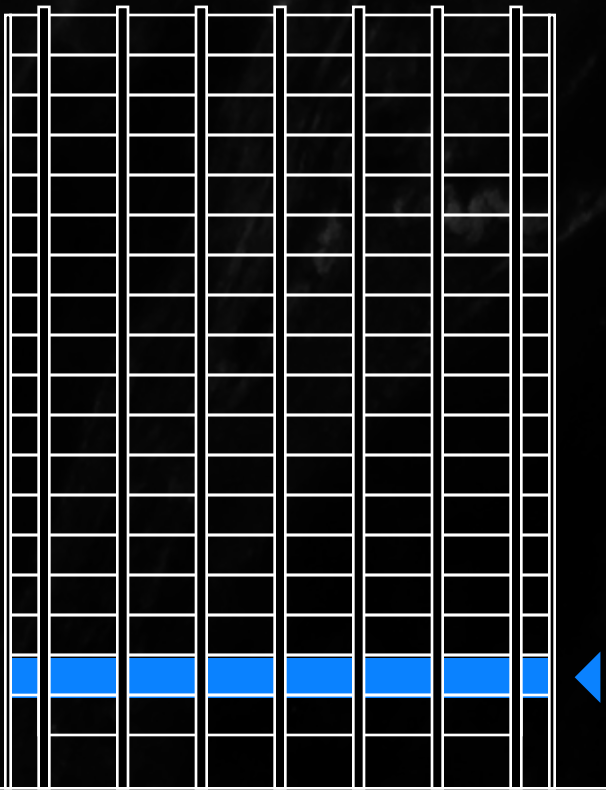
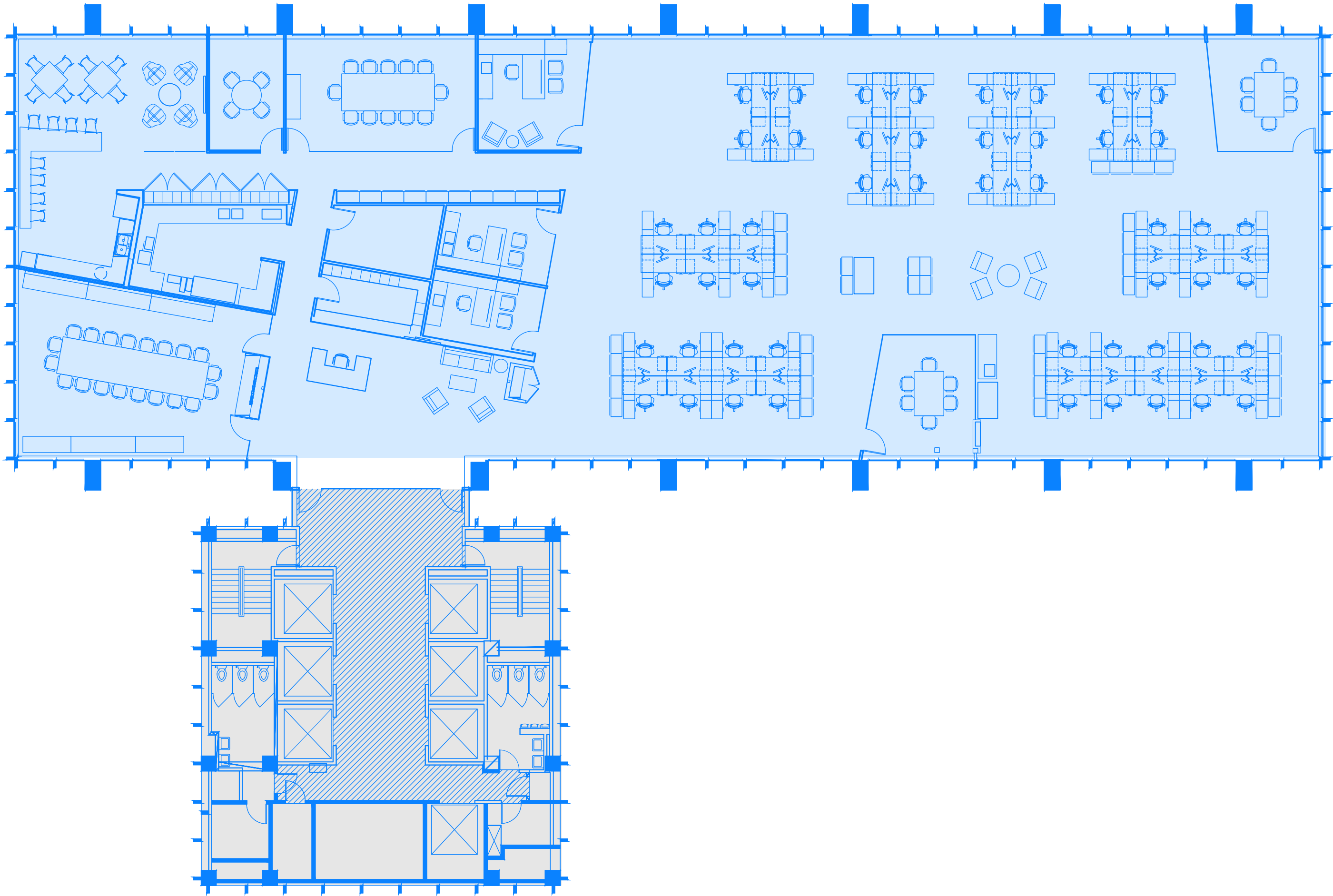


● Available ● Leased ● Building Core



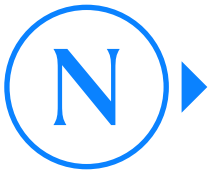
Floor 3

Suite 300 | 13,424 RSF (full floor)



◀ Back to stacking plan

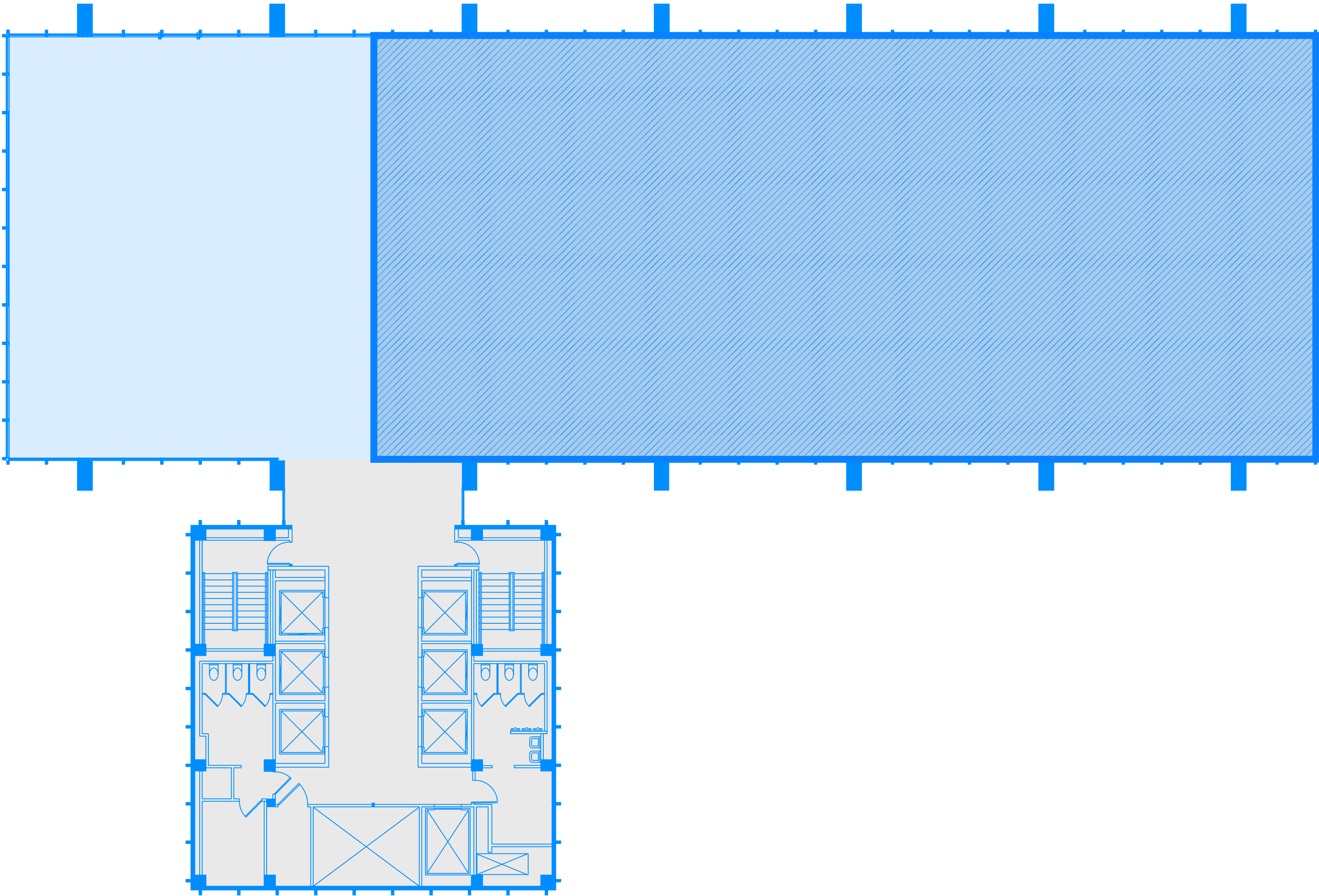
● Available ● Leased ● Building Core



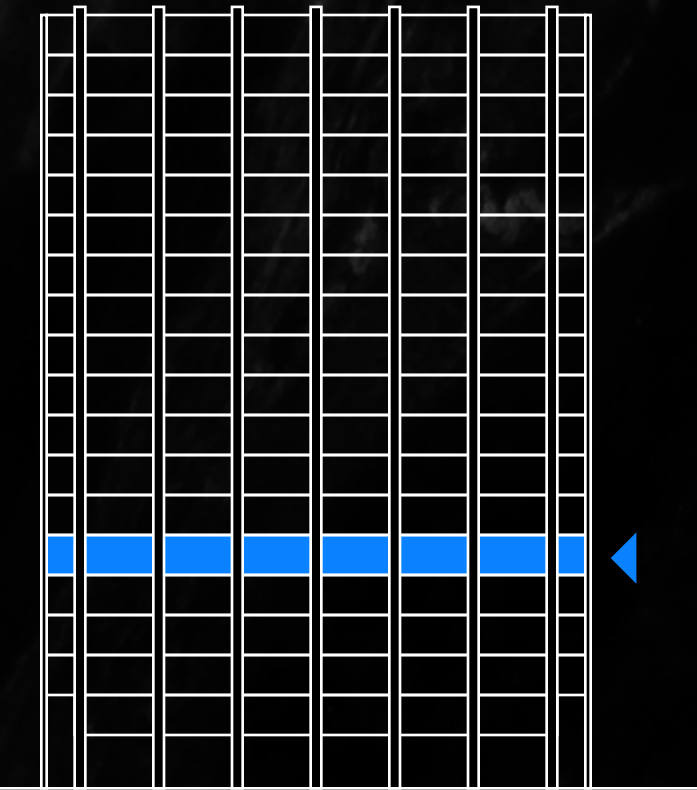
FLOOR PLANS

Floor 6

Suite 610 | 3,832 RSF



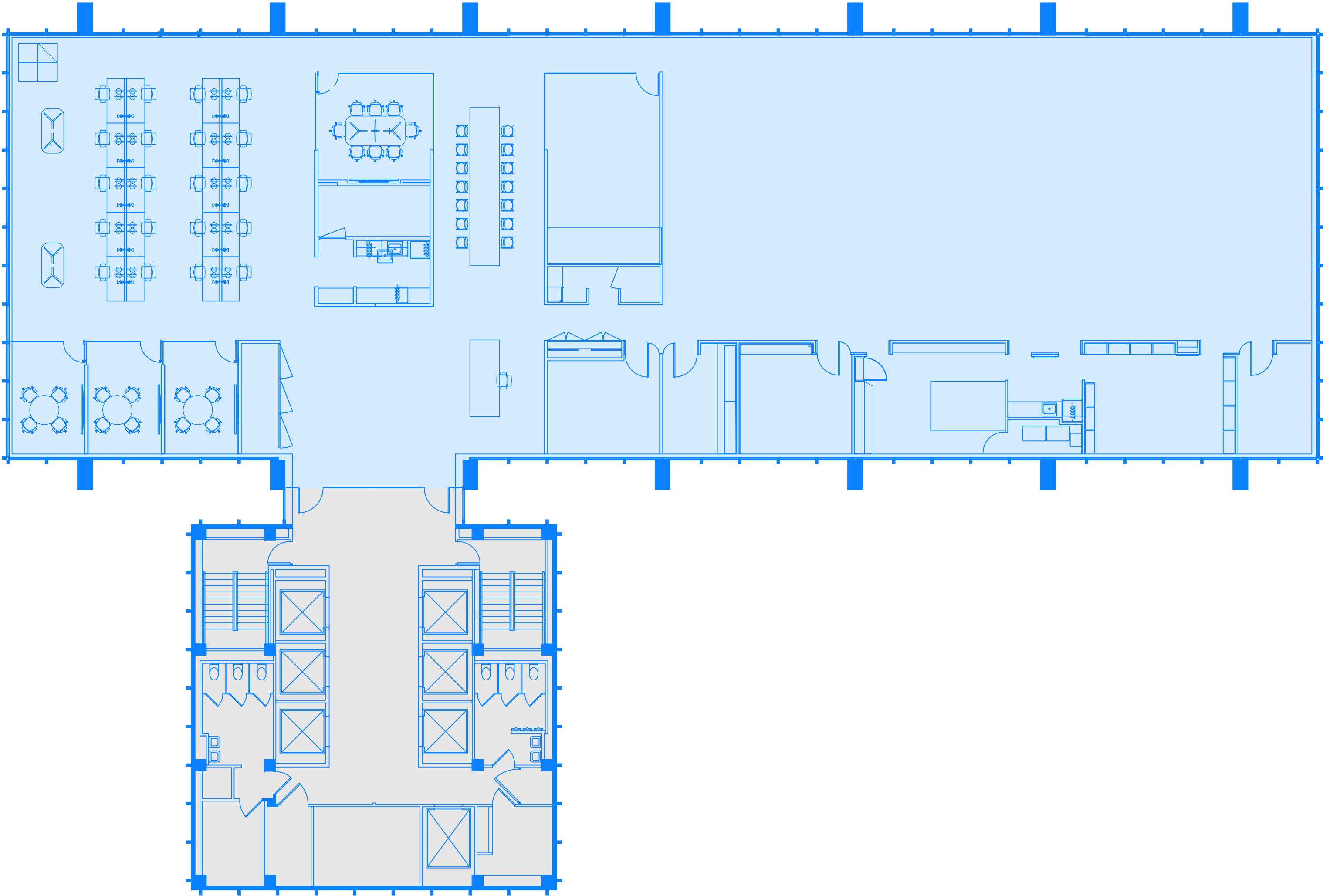
● Available ● Leased ● Building Core



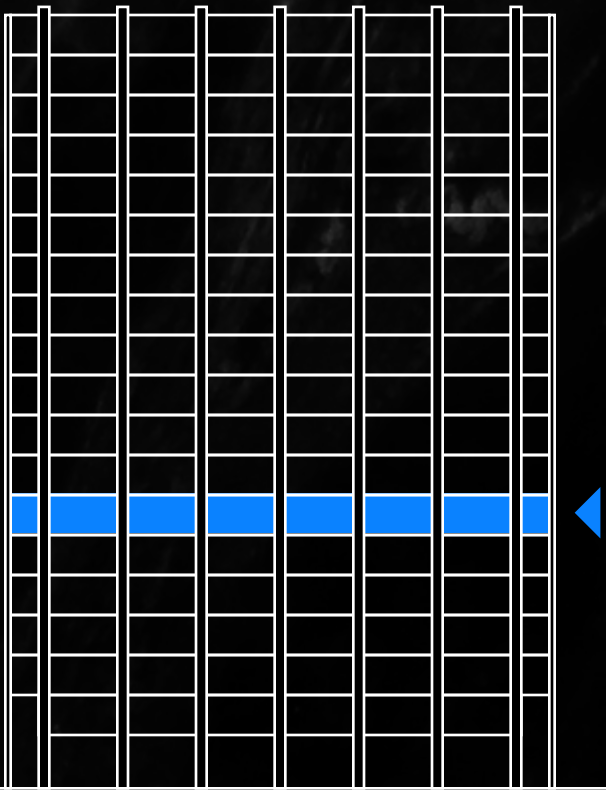
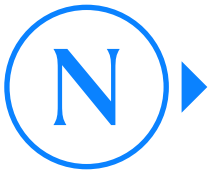
◀ Back to stacking plan

Floor 7

Suite 700 | 13,424 RSF (full floor)



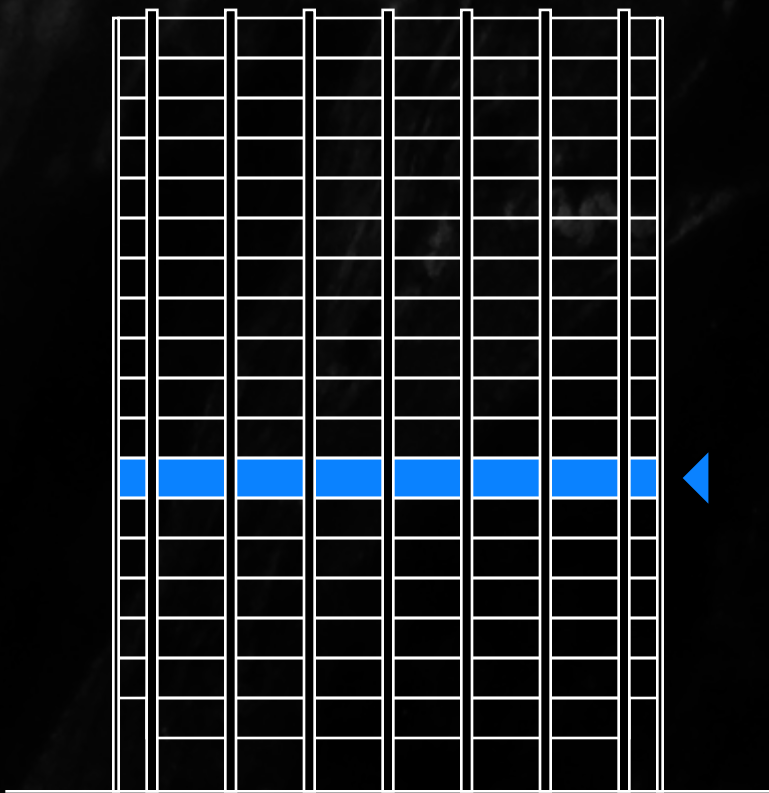
● Available ● Leased ● Building Core



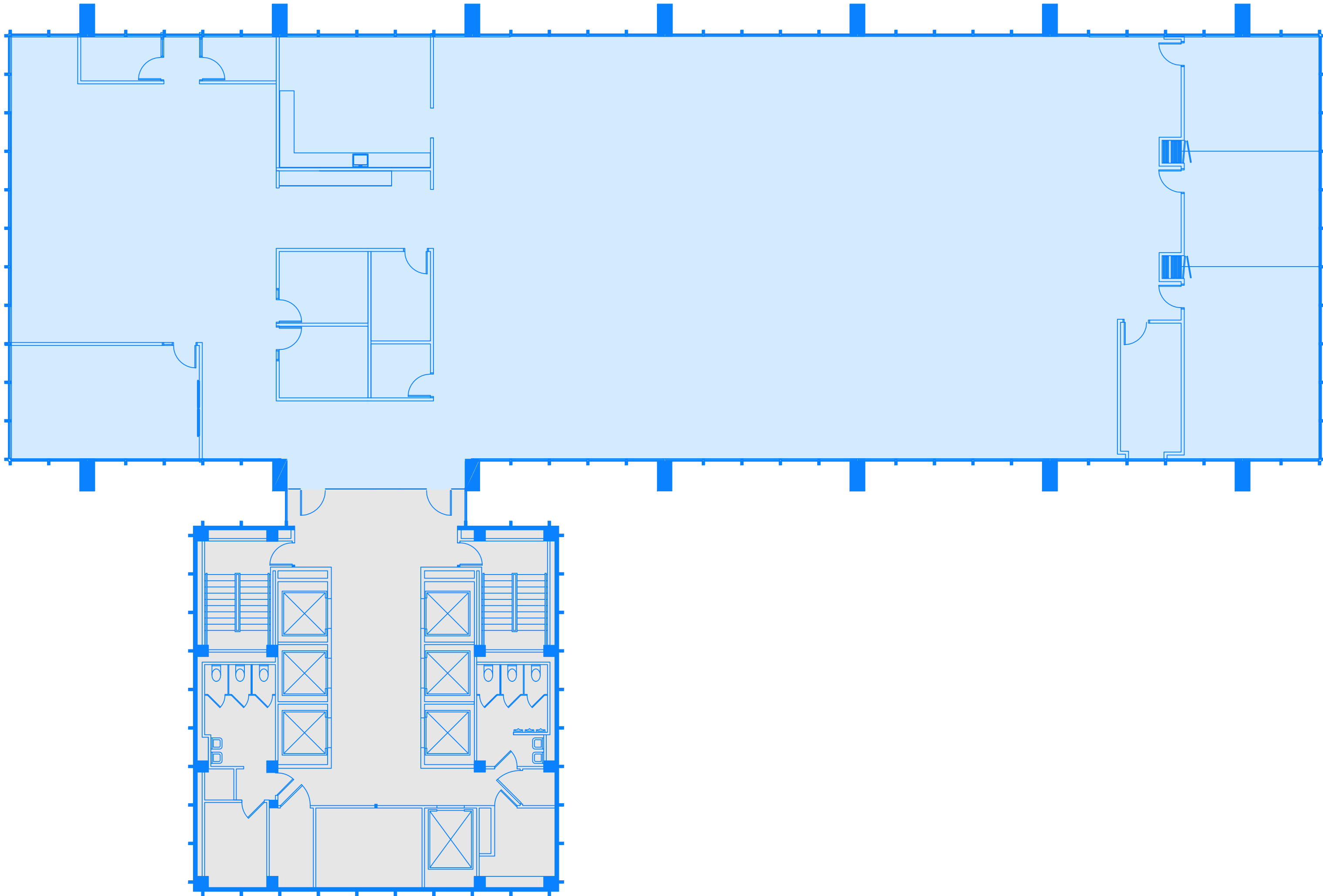
◀ Back to stacking plan

Floor 8

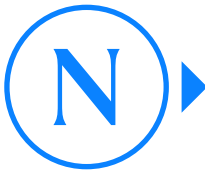
Suite 800 | 13,424 RSF (full floor)



◀ Back to stacking plan

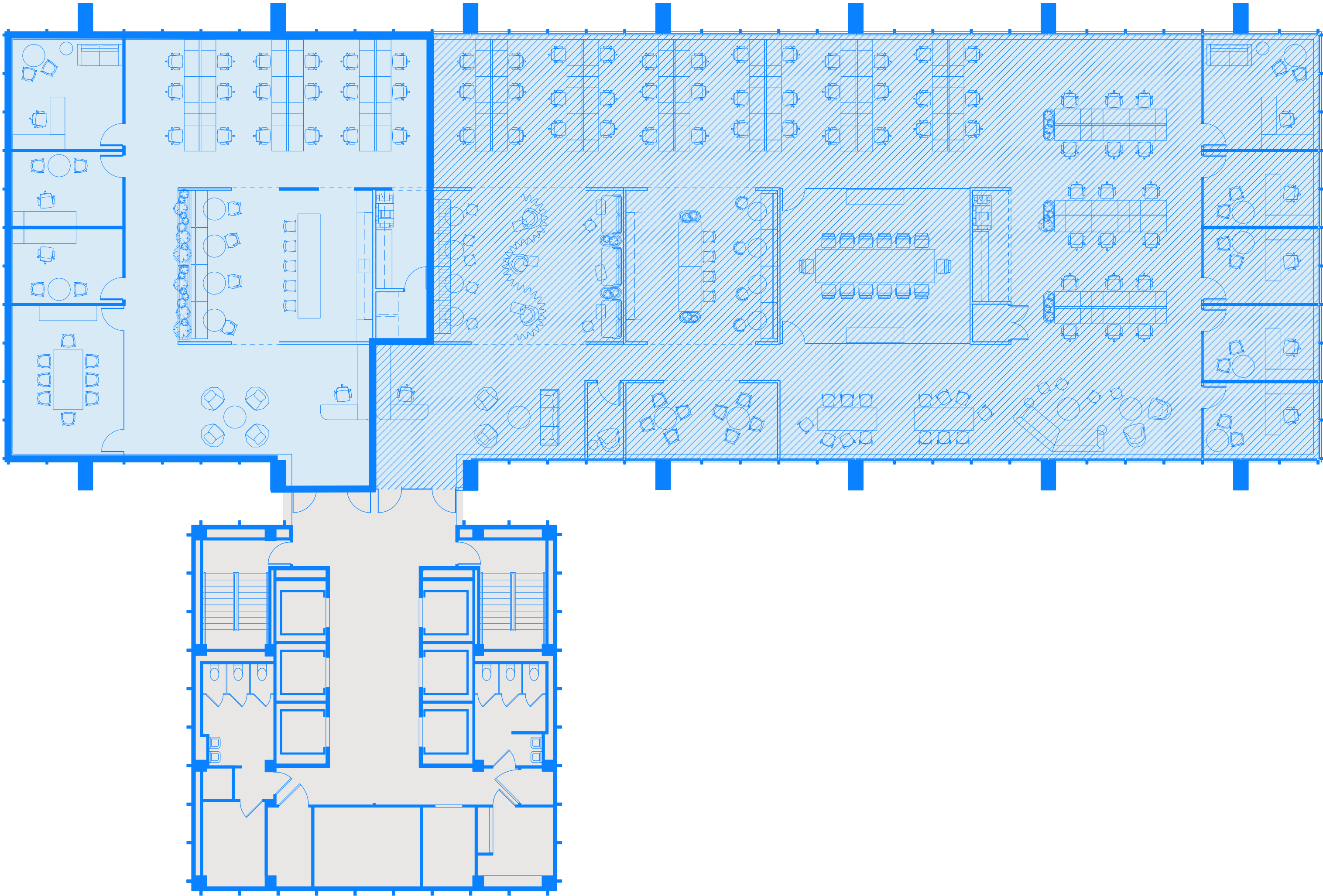


● Available ● Leased ● Building Core

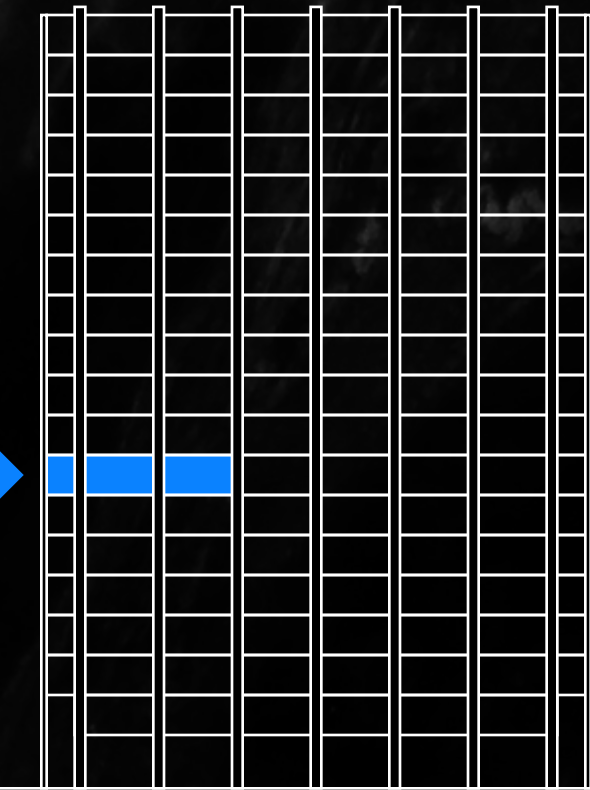
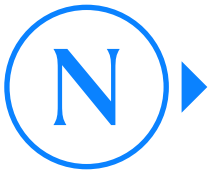


Floor 8

Suite 800A | 4,209 RSF



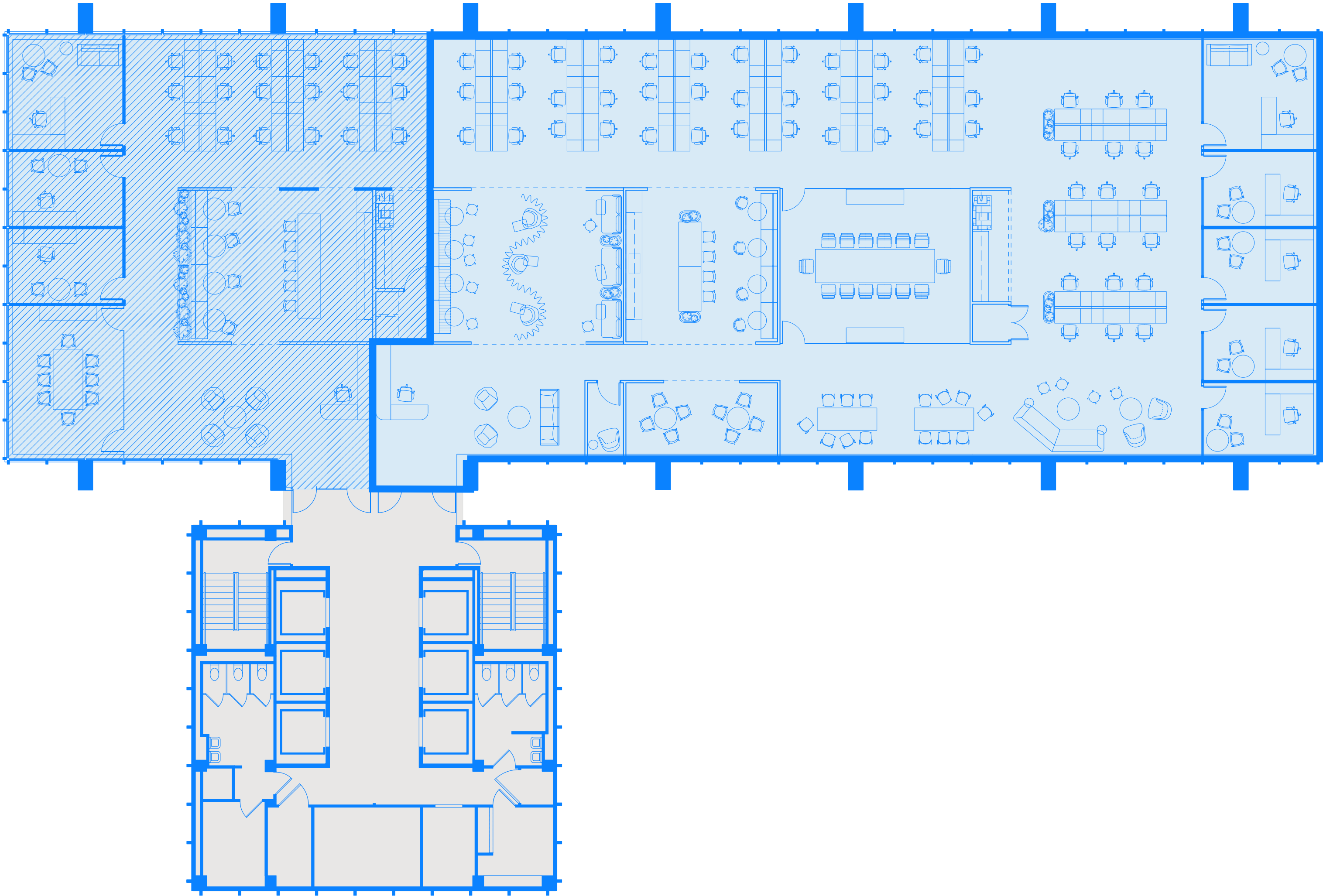
● Available ● Leased ● Building Core



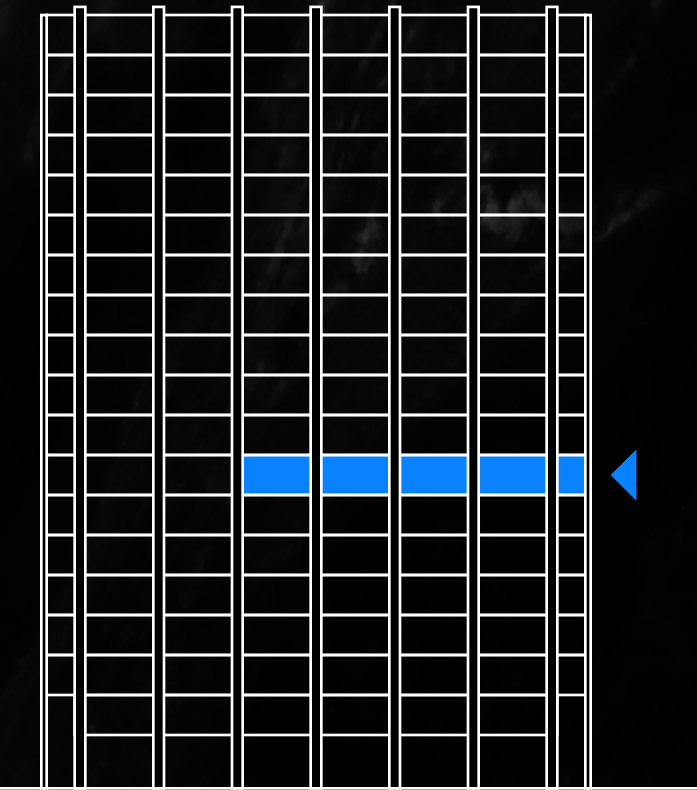
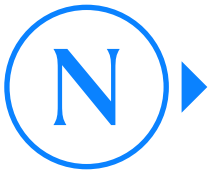
◀ Back to stacking plan

Floor 8

Suite 800B | 9,215 RSF



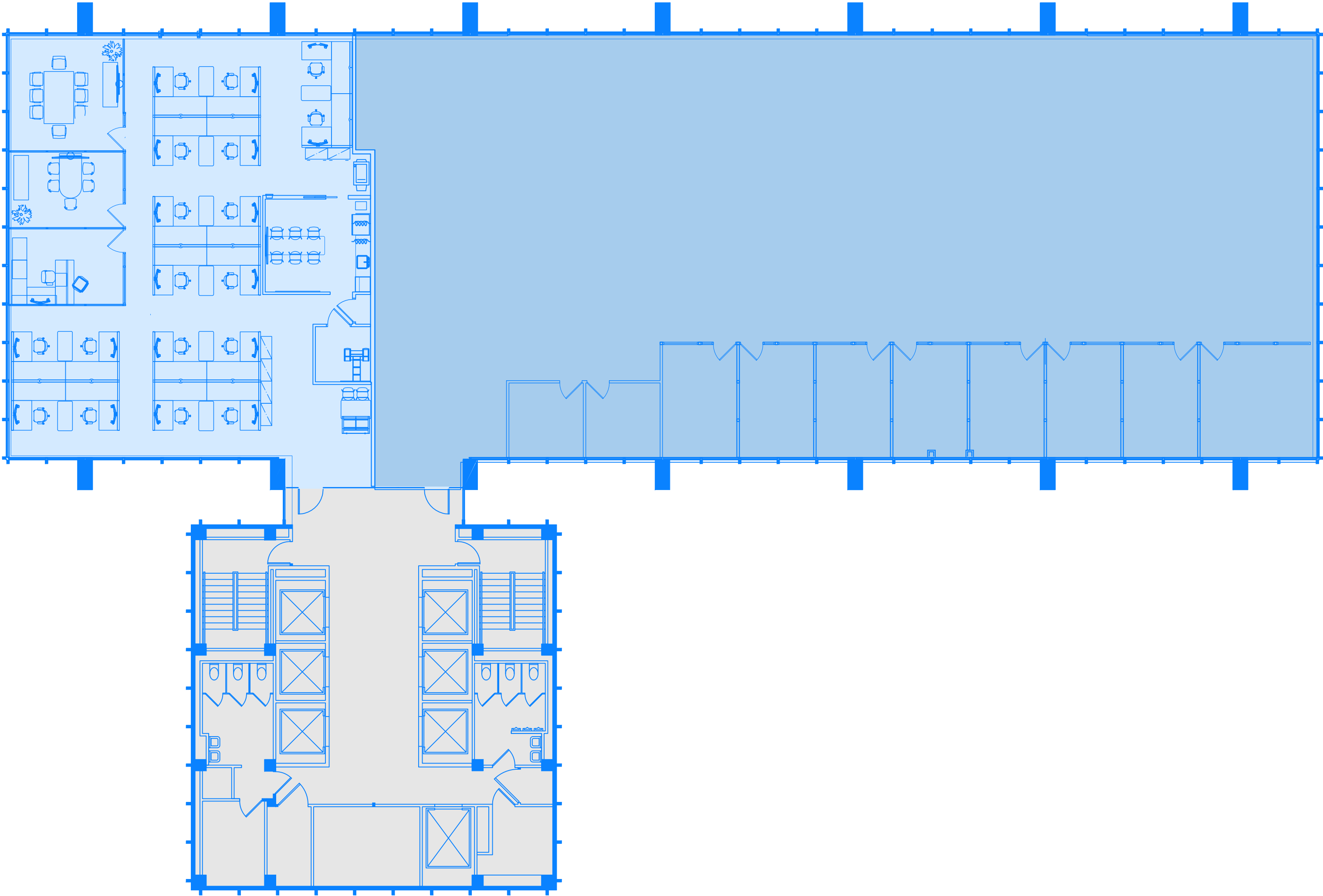
● Available ● Leased ● Building Core



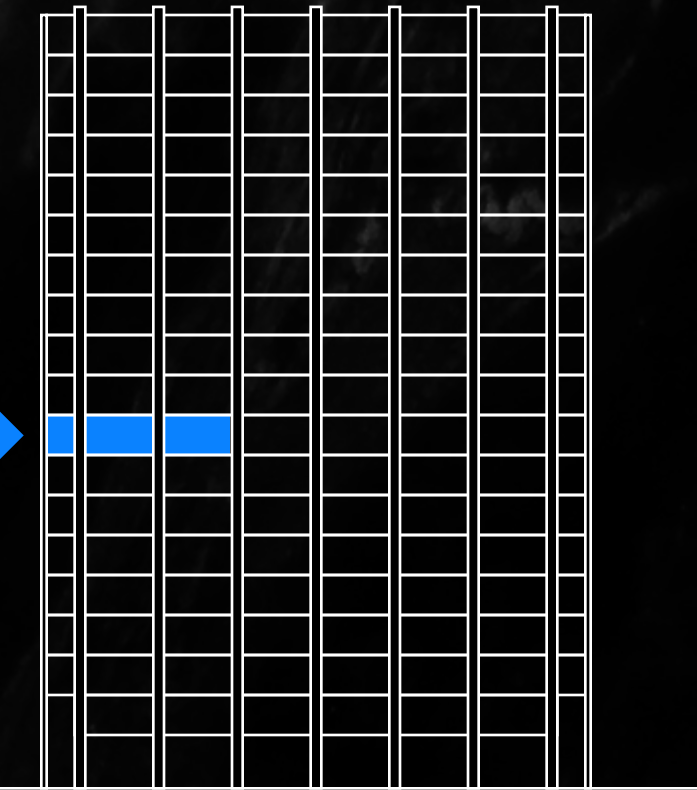
◀ Back to stacking plan

Floor 9

Suite 910 | 3,725 RSF



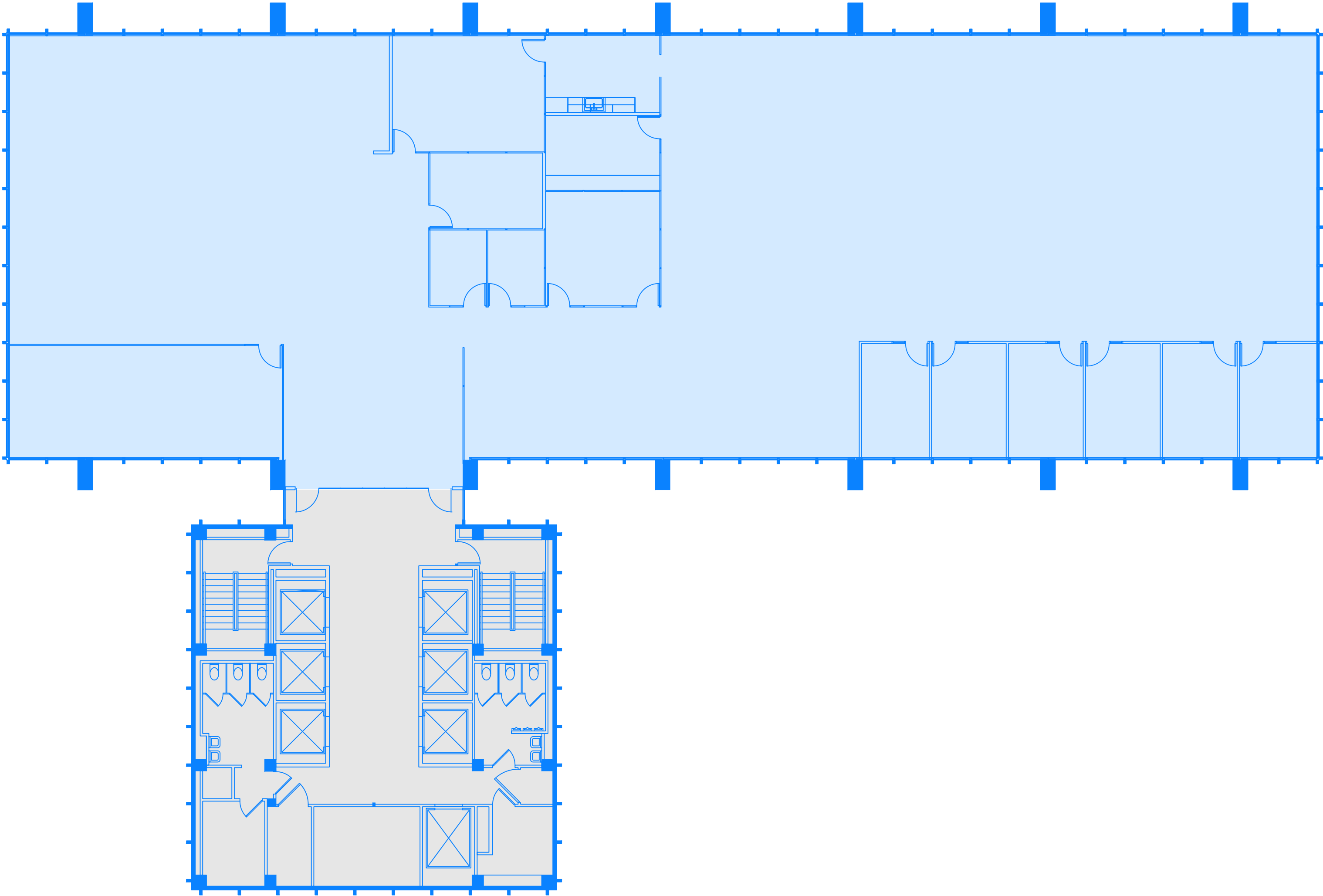
● Available ● Leased ● Building Core



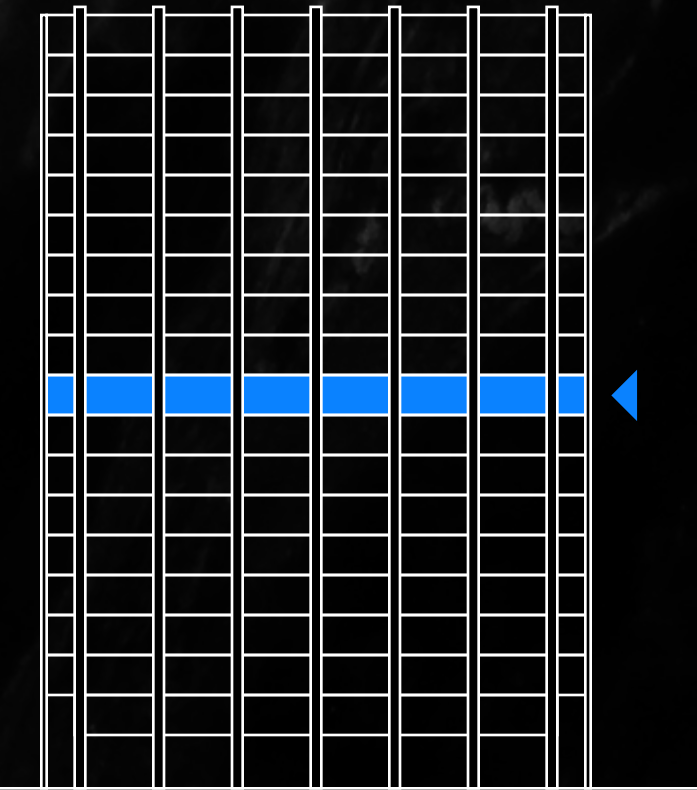
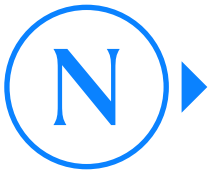
◀ Back to stacking plan

Floor 10

Suite 1000 | 13,424 RSF (full floor)



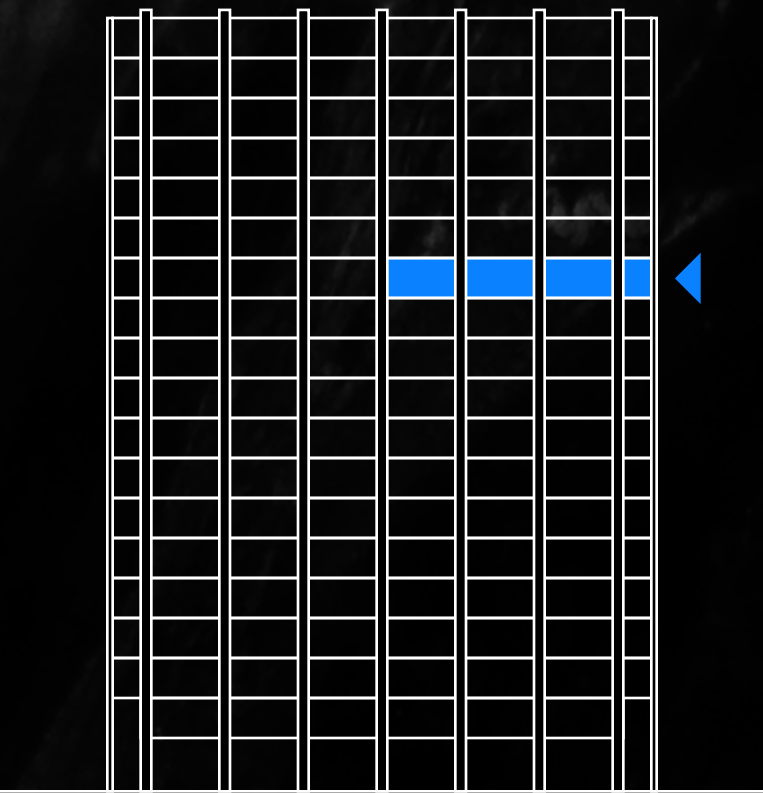
● Available ● Leased ● Building Core



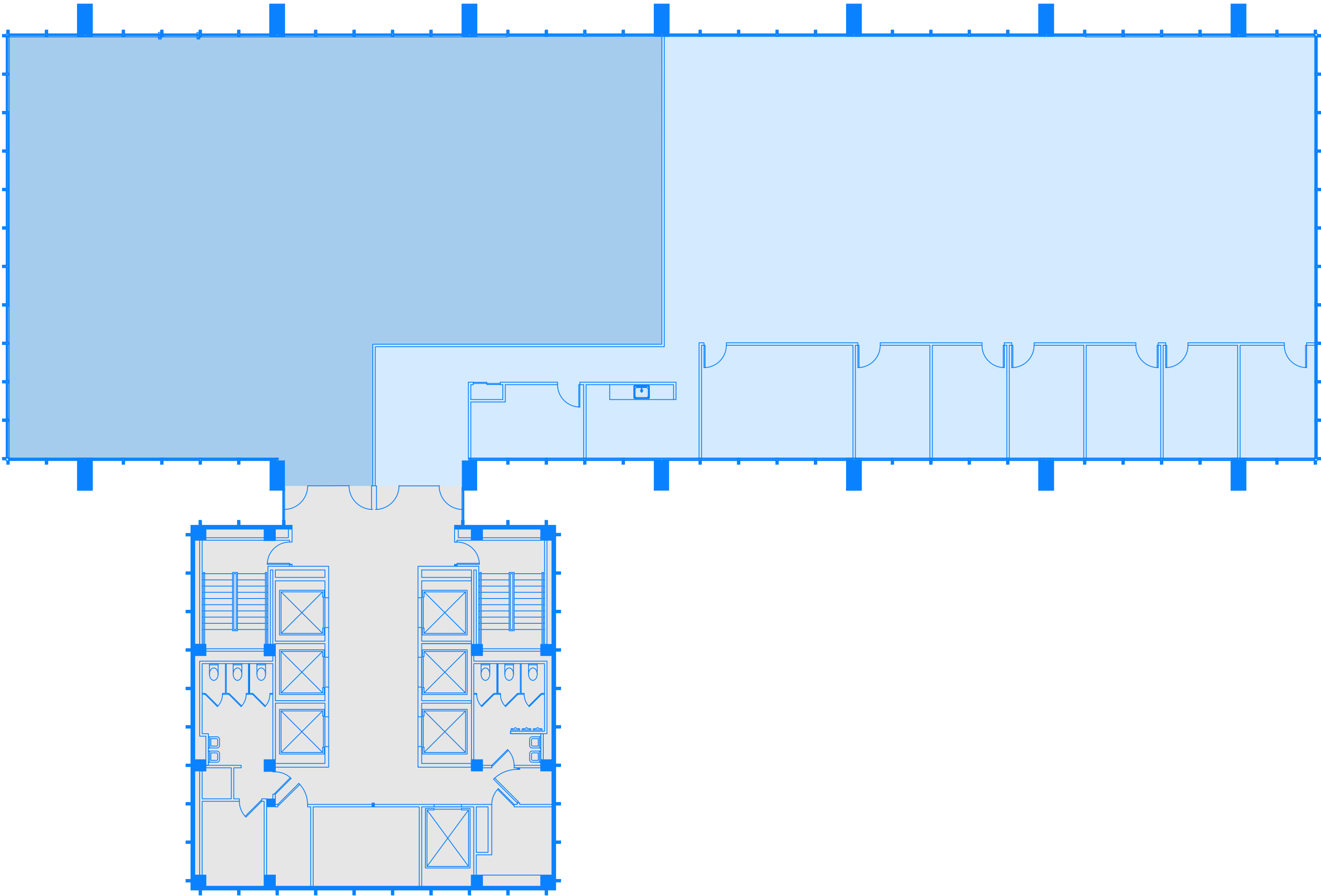
◀ Back to stacking plan

Floor 13

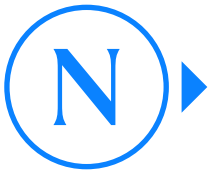
Suite 1300 | 7,556 RSF



◀ Back to stacking plan

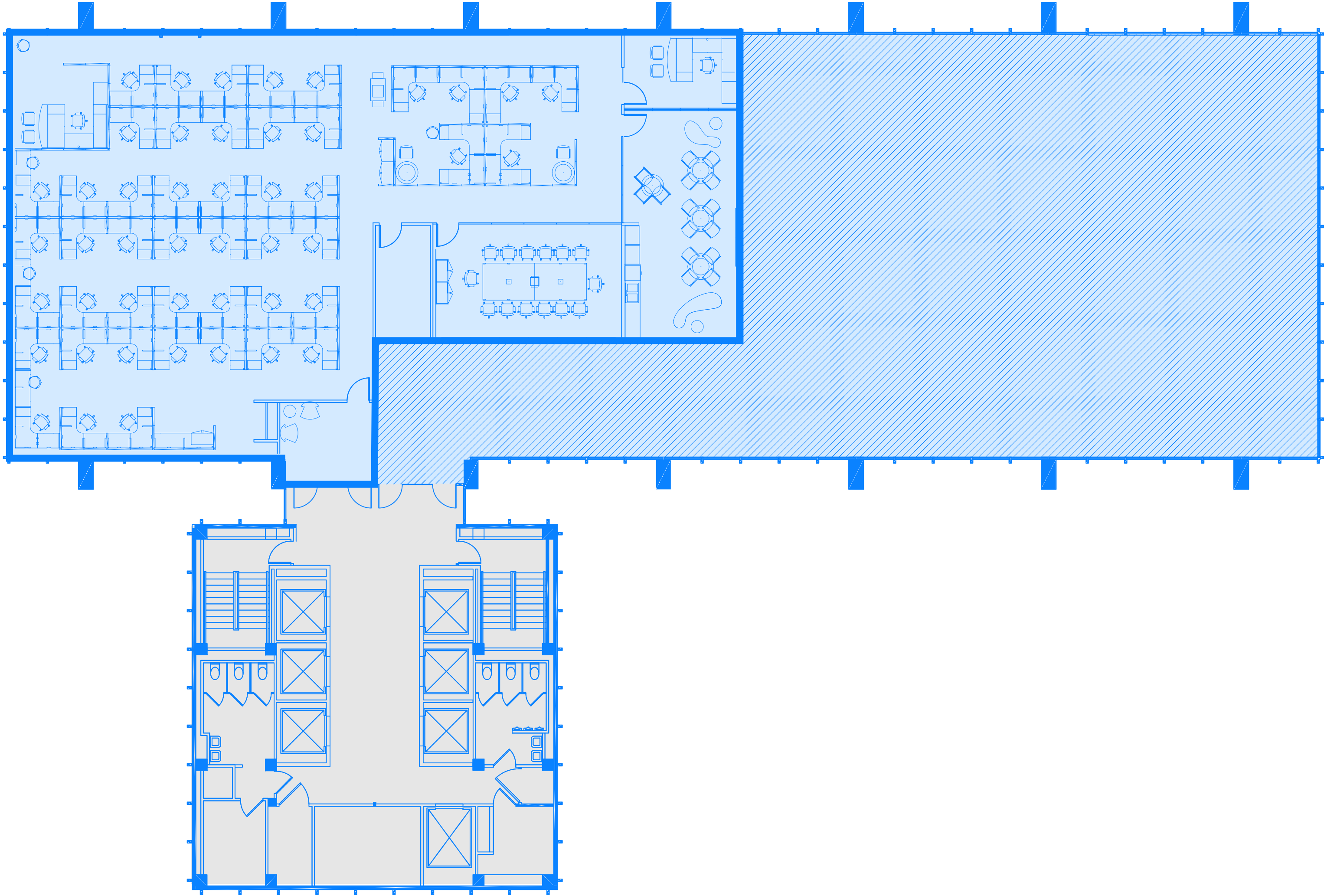


● Available ● Leased ● Building Core

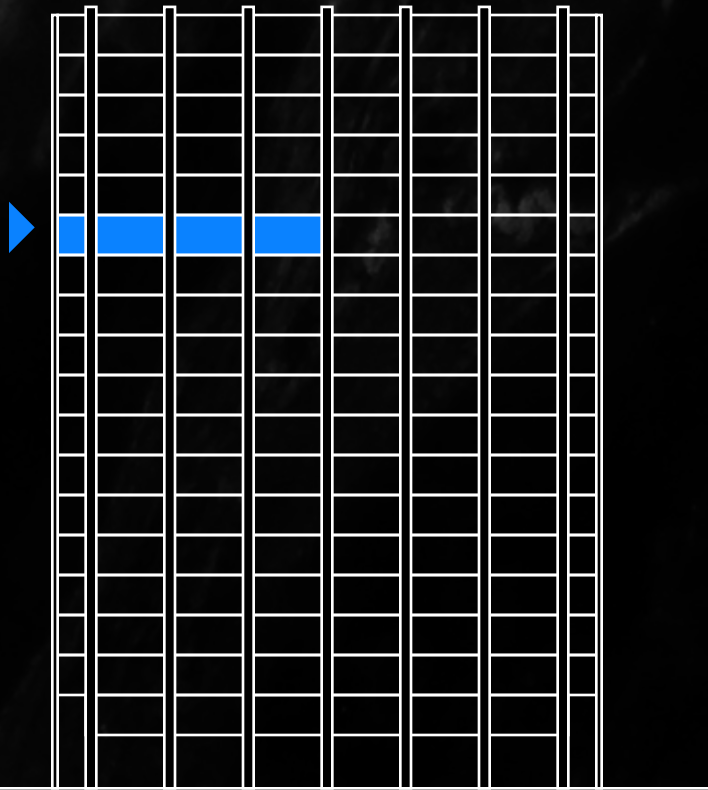


Floor 14

Suite 1400 | 6,475 RSF



● Available ● Leased ● Building Core

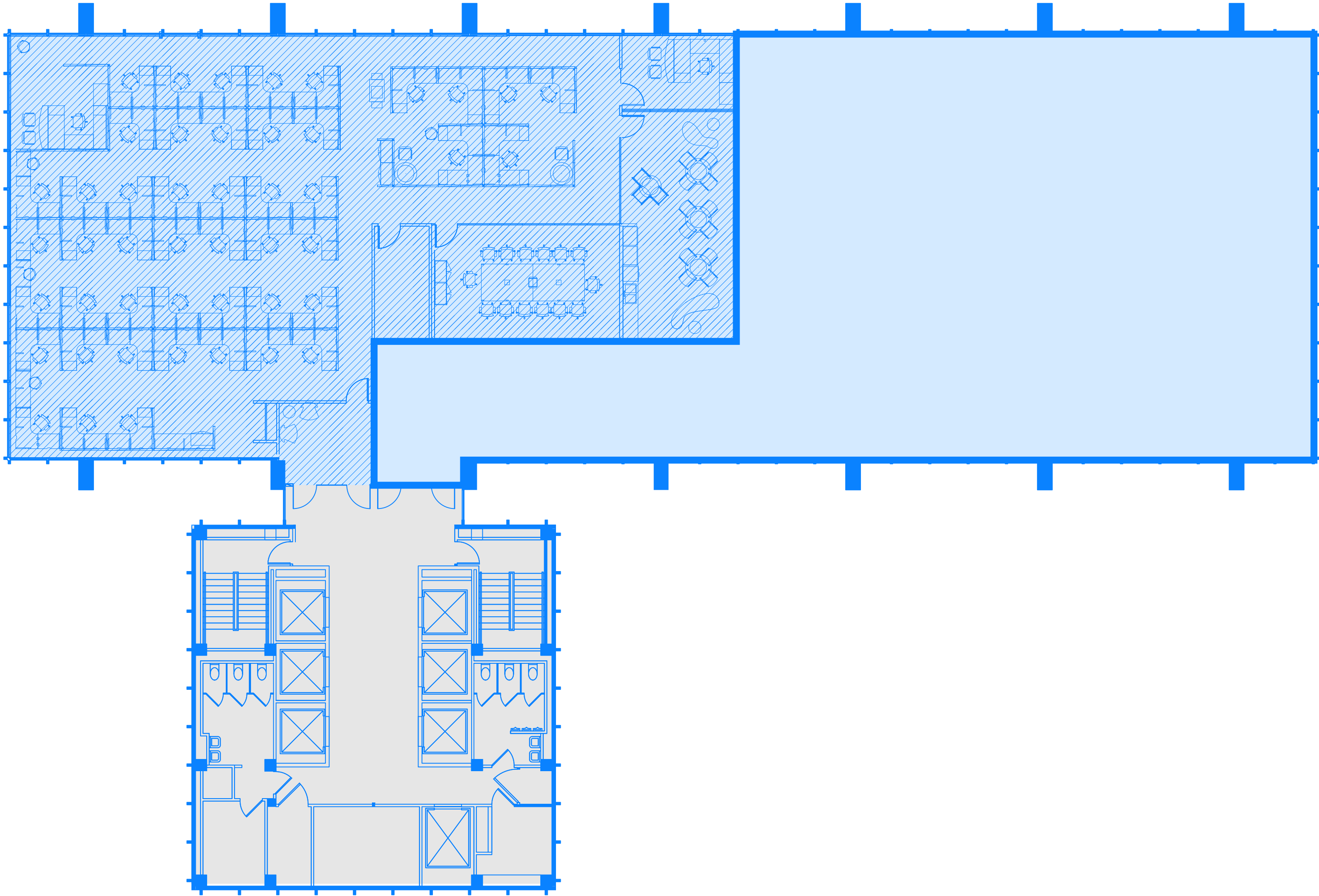


◀ Back to stacking plan

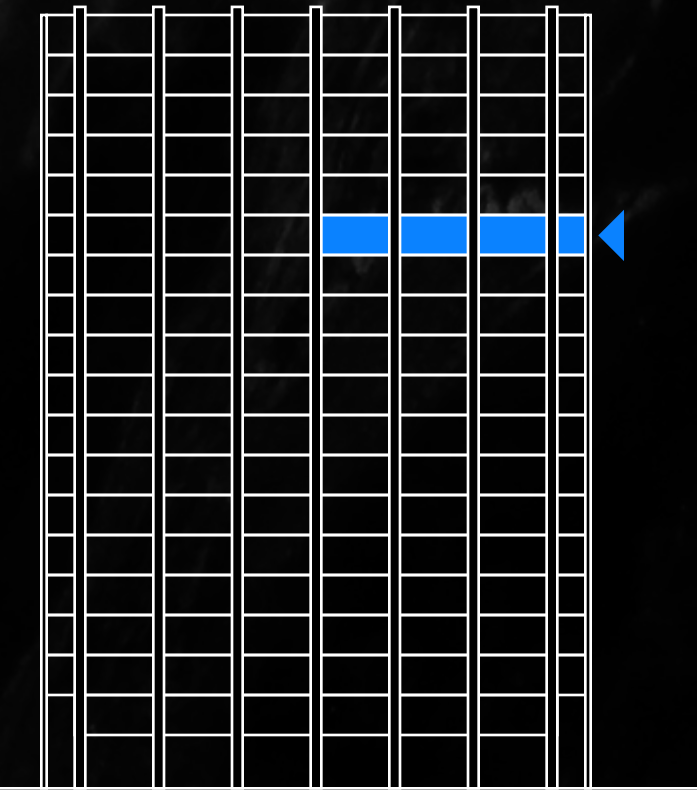
FLOOR PLANS

Floor 14

Suite 1410 | 6,949 RSF



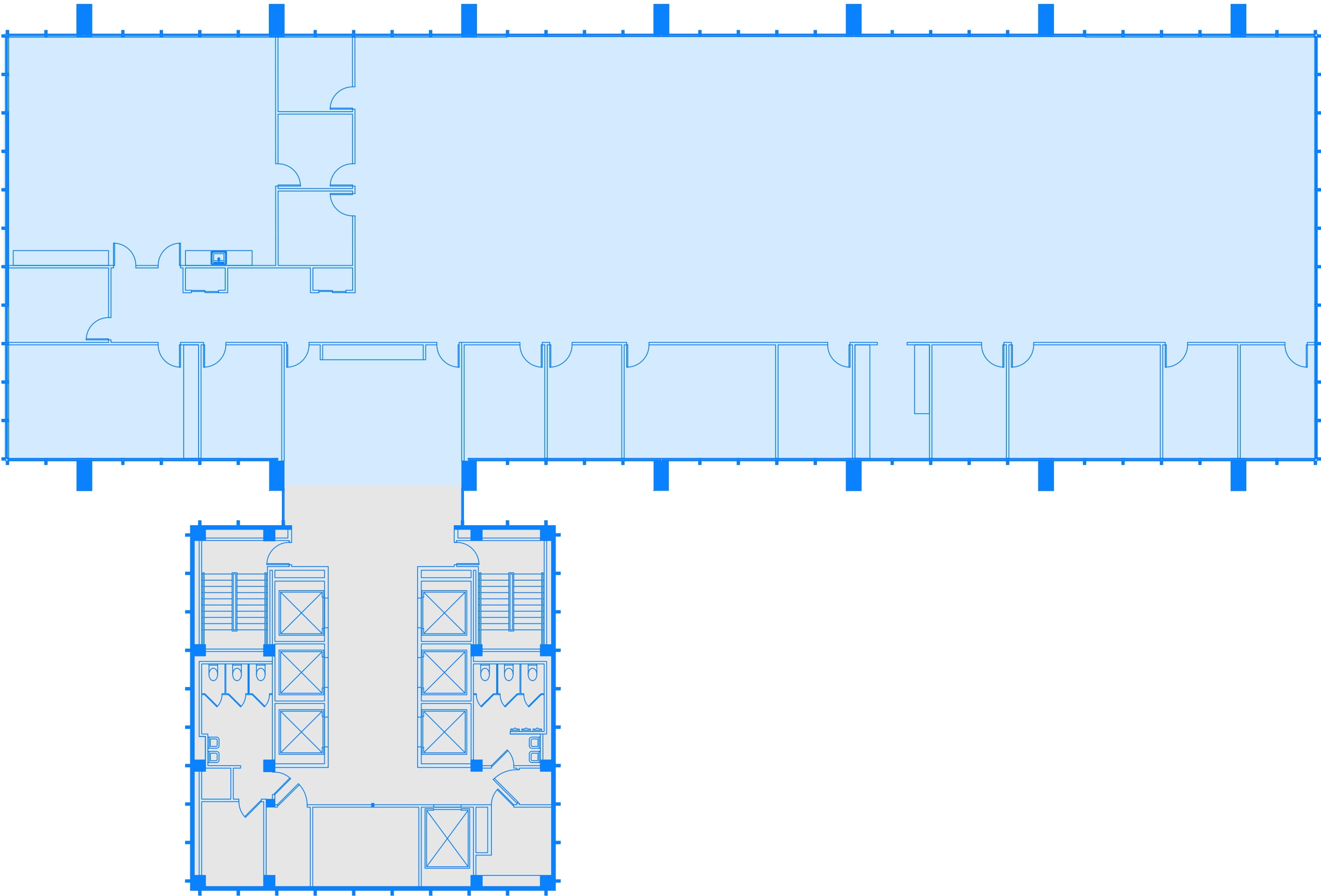
● Available ● Leased ● Building Core



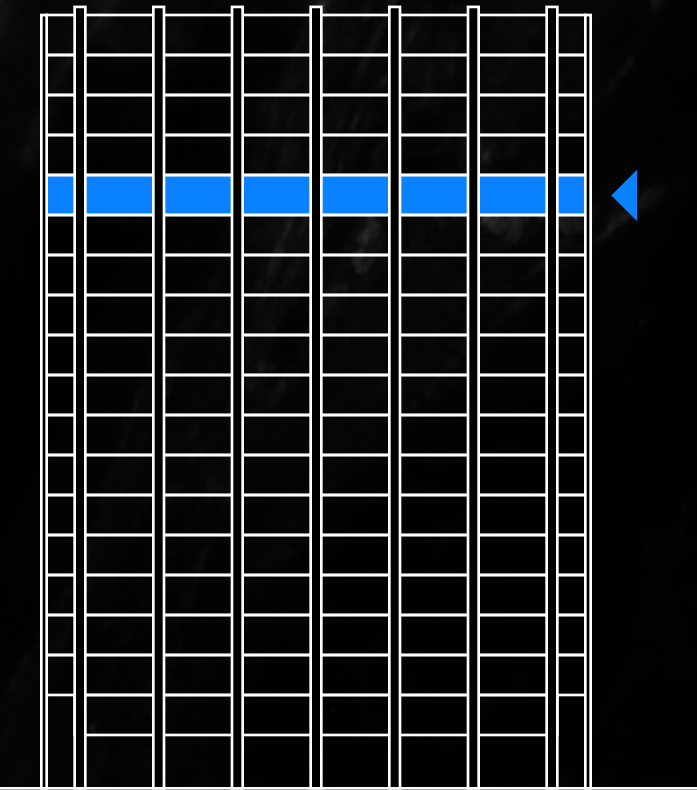
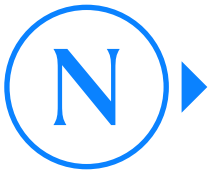
◀ Back to stacking plan

Floor 15

Suite 1500 | 13,424 RSF (full floor)



● Available ● Leased ● Building Core



◀ Back to stacking plan

The Pillars of Our Success



INVESTMENTS

As the real estate manager of NYL Investors,* Real Estate Investors brings more than a century¹ of expertise delivering dedicated solutions to our partners and clients through every market cycle and economic environment. With \$67.8 billion under management, and more than 170 real estate investment professionals investing in 40 states and 150 markets across the U.S., our team seeks the best opportunities wherever they may arise.



Since 1947, Colliers | Chicago has provided effective real estate solutions to clients across the greater Chicago area. Comprised of more than 300 real estate advisors, property management professionals, and staff, Colliers | Chicago provides a full range of real estate services to investors, property owners, tenants, and developers in several industries, including Chicago's burgeoning tech industry.

For Additional Information:

Michael Lirtzman

T: (312) 612-5933

E: michael.lirtzman@colliers.com

Michelle Levy

T: (312) 416-1527

E: michelle.levy@colliers.com



InlandSteelBuilding.com